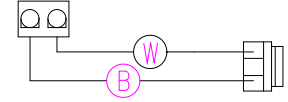
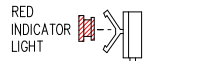


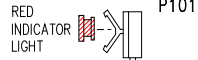
12V Light (White 2-Pin)



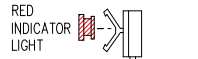
**SYSTEM FUSE**



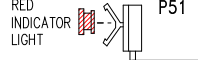
**HIGH-LIMIT**



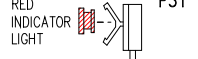
**PUMP 1 FUSE**



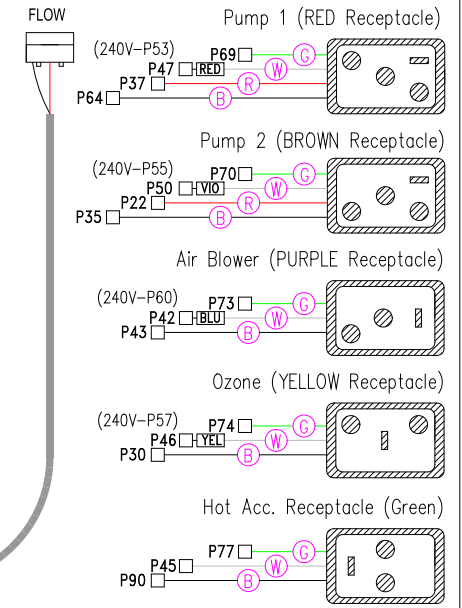
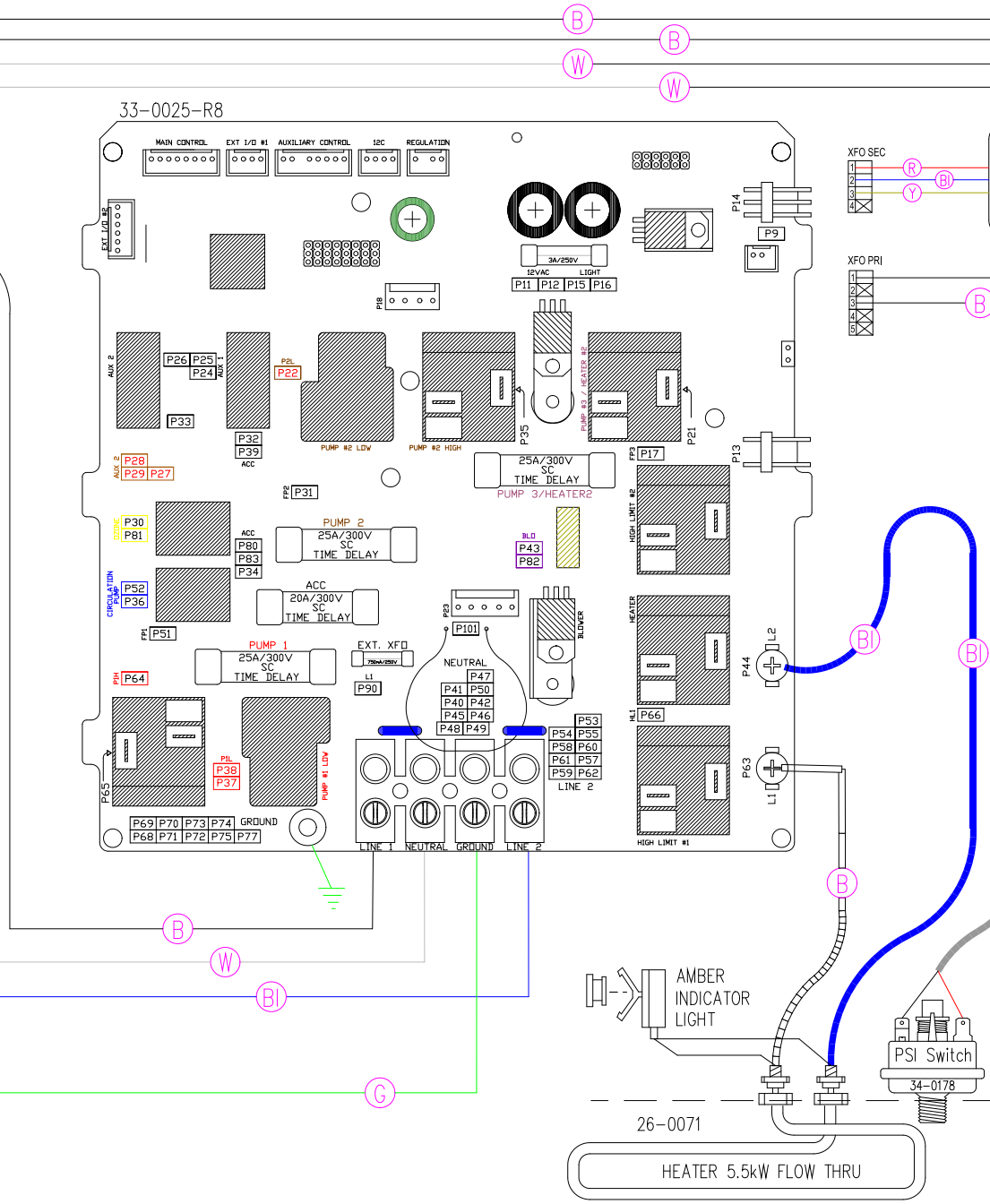
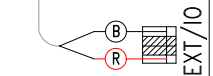
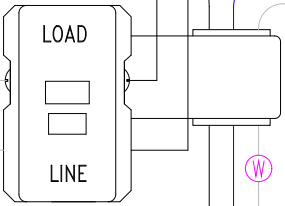
**PUMP 2 FUSE**



**AIR/CIRC/OZ FUSE**



LINE 1  
NEUT  
GRND  
LINE 2



**HYDRO-QUIP**  
CORONA, CA (951) 273-7575

Manufacture Notes: EX: RED - DENOTES THE COLOR OF HEAT SHRINK USED.

For 120V Operation:

a) Heater plug (#1) installed into receptacle labeled 120V

For 240V Operation:

b) Install Heater plug (#1) into receptacle labeled 240V

Drawn PMO	Rev 15	Wire Color Code B - Black Br - Brown R - Red O - Orange Y - Yellow G - Green Bl - Blue V - Violet W - White Gr - Gray
Date 07.31.07		
Diagram No. 4418		